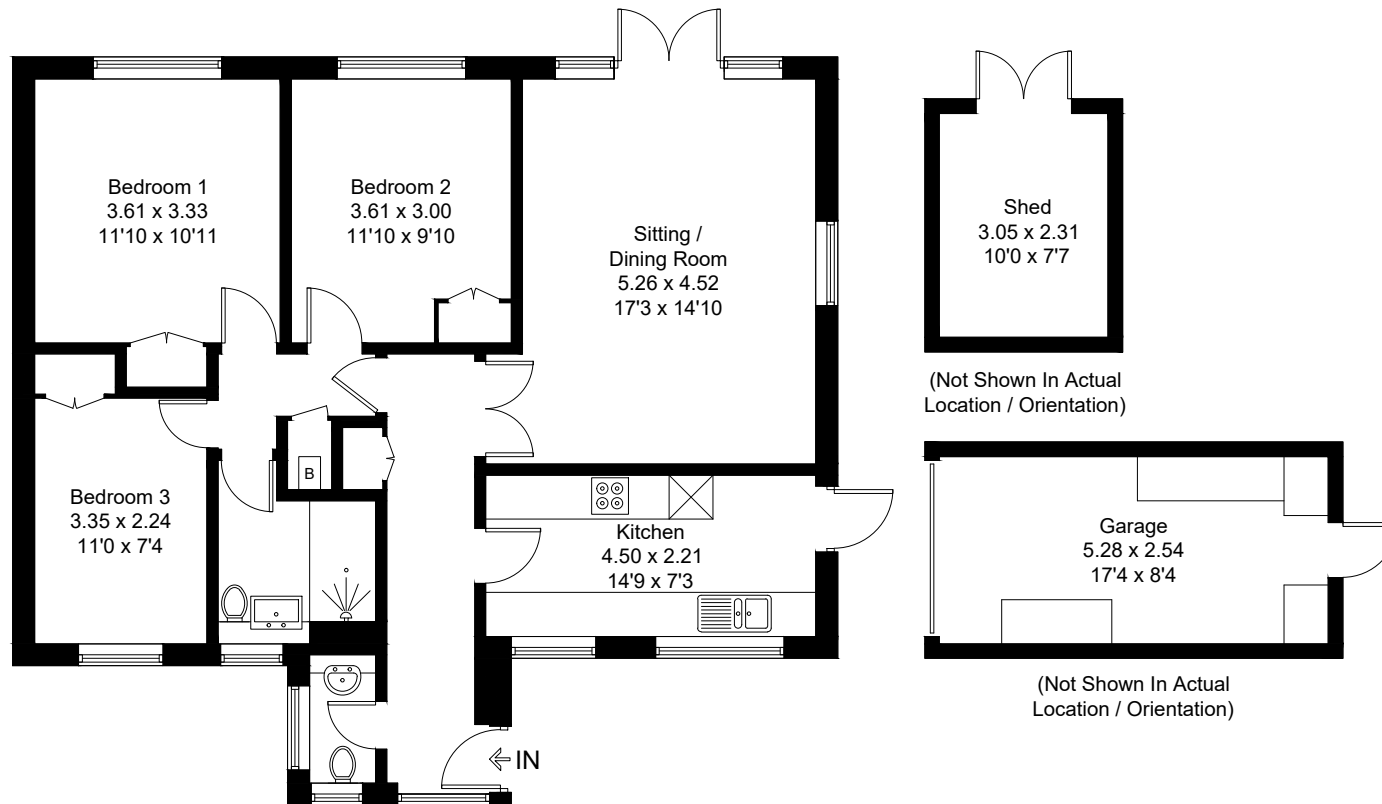
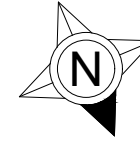


Approximate Gross Internal Area = 86.7 sq m / 933 sq ft
Outbuildings = 20.5 sq m / 221 sq ft
Total = 107.2 sq m / 1154 sq ft



Ground Floor

Created by **BAY TREE ESTATES - Telephone 01243 850451.**

These plans are for representation purposes only as defined by RICS - Code of Measuring Practice. Not to scale.(ID1214690)